

Section 1A

I-76 to North of 120th Avenue

FREEWAY

Conceptual Improvement Recommendations

Section 1A

I-76 to North of 124th Avenue

FREEWAY



104th Ave.
• Flyover Single Point Urban Interchange (SPUI)

Close Longs Peak Drive access
• Allow emergency access

COMMERCE CITY

112th Ave.
• Single Point Urban Interchange (SPUI)

120th Ave.
• Diverging Diamond Interchange (DDI)

OPTION

120th Ave.
• Diamond Interchange

124th Ave.
• Full closure



US 81 P&E 0.06 01.03.08

104th Ave. OPTION
• Split Diamond



Section 1B

Nome Street to North of 144th Avenue

FREEWAY

Conceptual Improvement Recommendations

Section 1B

Nome Street to North of 144th Avenue

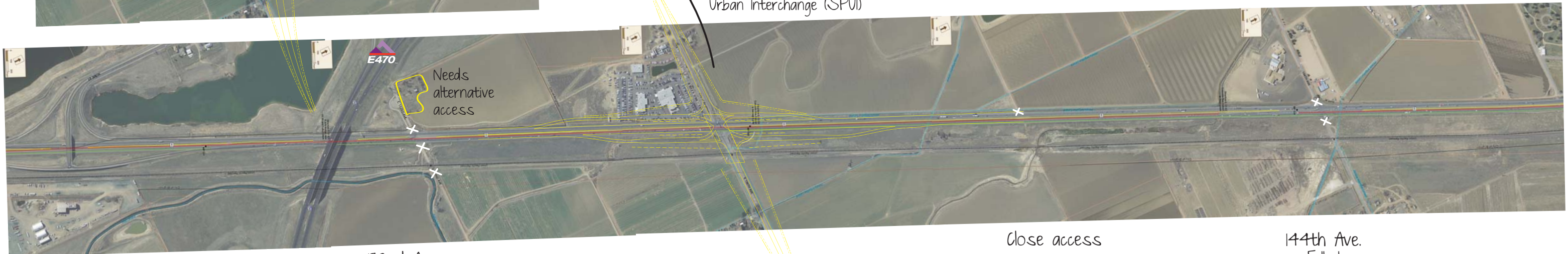
FREEWAY



136th Ave.
• Shifted Single Point Urban Interchange (SPU)

Option ←

136th Ave.
• Single Point Urban Interchange (SPU)



No change at E-470

132nd Ave.
• Full closure
• Allow emergency access

Close access

144th Ave.
• Full closure

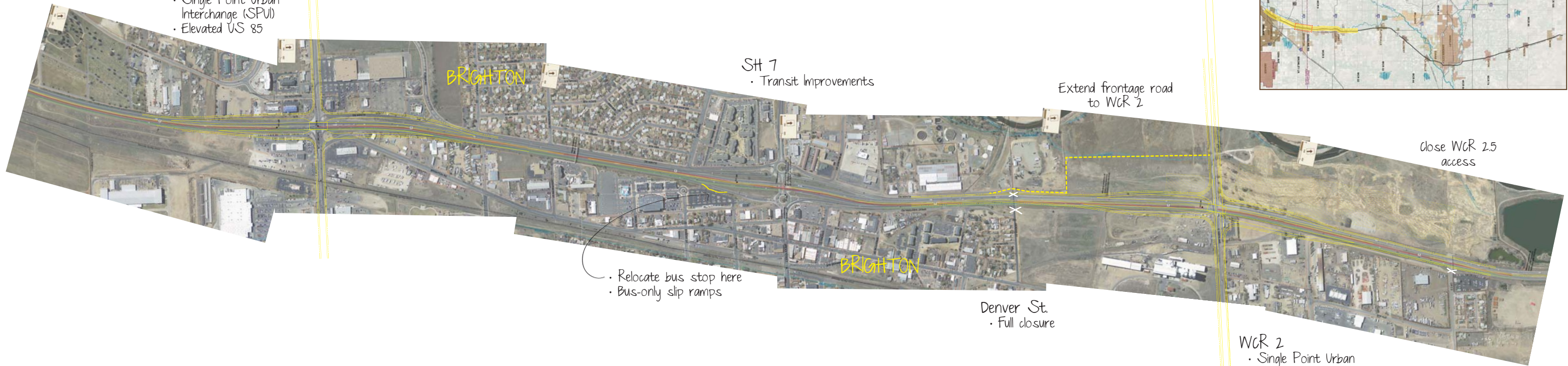


Section 1C

South of Bromley Lane to North of CR 2.5

FREEWAY

- Bromley Lane
- Single Point Urban Interchange (SPUI)
 - Elevated US 85



- SH 7
- Transit Improvements

Extend frontage road to WCR 2

- Relocate bus stop here
- Bus-only slip ramps

- Denver St.
- Full closure

close WCR 2.5 access

- WCR 2
- Single Point Urban Interchange (SPUI)
 - Elevated US 85

Conceptual Improvement Recommendations

Section 1C

South of Bromley Lane to North of CR 2.5

FREEWAY



Section 1D

South of CR 4 to CR 10

FREEWAY

Conceptual Improvement Recommendations

Section 1D

South of CR 4 to CR 10

FREEWAY



WCR 6
• Tight Diamond Interchange

OPTION

WCR 6
• Parclo interchange

WCR 8
• Junior interchange
• Hook ramps

Close access,
provide alternate
access

WCR 10
• No access

Extend access
to WCR 8

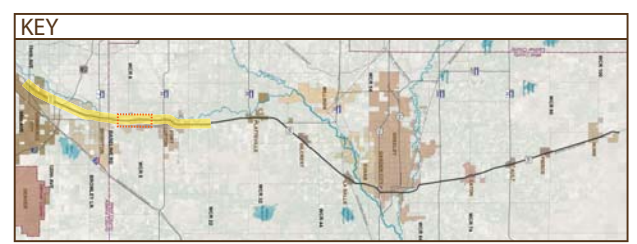
No alternative access



WCR 4
• Full closure

Close
access

WCR 6.25
• Full closure



Section 1E

North of CR 10 to CR 16

FREEWAY

Conceptual Improvement Recommendations

Section 1E

North of CR 10 to CR 16

FREEWAY



Section 1F

North of CR 16 to CR 22

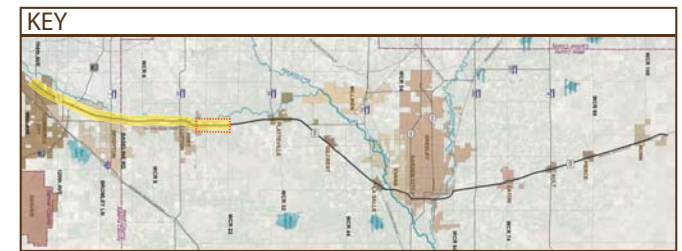
ENHANCED EXPRESSWAY

Conceptual Improvement Recommendations

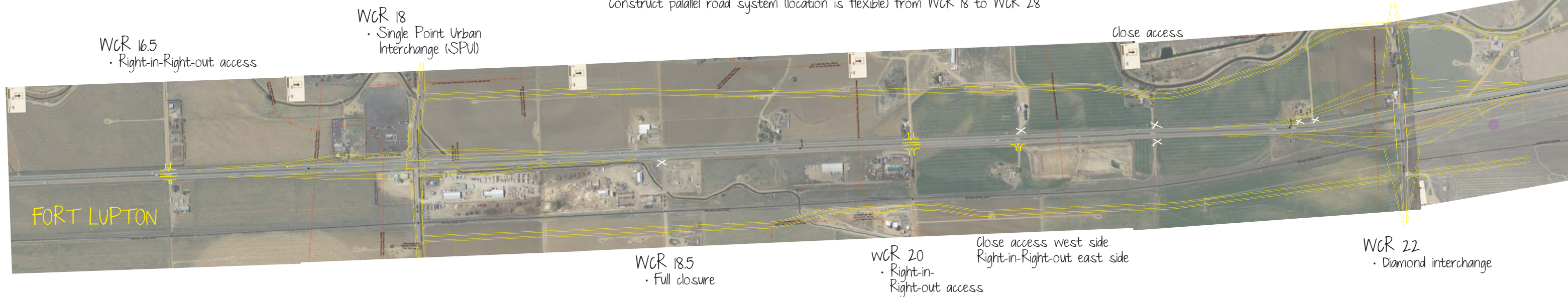
Section 1F

North of CR 16 to CR 22

ENHANCED EXPRESSWAY



Construct parallel road system (location is flexible) from WCR 18 to WCR 28



Section 2A

South of WCR 22 to South of CR 30 in Platteville

ENHANCED EXPRESSWAY

Conceptual Improvement Recommendations

Section 2A

South of WCR 22.5 to South of CR 30 in Platteville

ENHANCED EXPRESSWAY



Add parallel frontage roads east and west of US 85 between WCR 22 and WCR 2 (location is flexible)



Section 2B

WCR 30 in Platteville to SH 60

STANDARD EXPRESSWAY

Conceptual Improvement Recommendations

Section 2B
WCR 30 in Platteville to North of SH 60

ENHANCED EXPRESSWAY



US 85 / SH 66
Channelized-T
• SB US 85 is grade separated at SH 66

Marion Ave.
• 3/4 access on west side
• Closure on east side

Relocate Business Route R/R/O

US 85 / WCR 32
• Cul-de-sac frontage roads
• Add lanes

US 85 / WCR 34
Diamond Interchange

Close WCR 36

US 85 / SH 60
Diamond Interchange



Section 2C

North of SH 60 to North of WCR 42

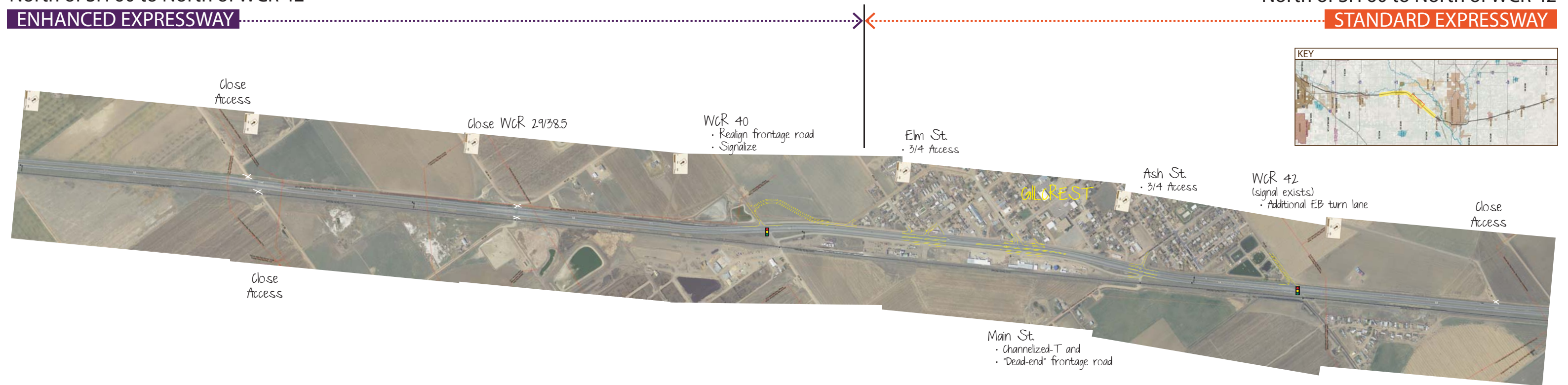
ENHANCED EXPRESSWAY

Conceptual Improvement Recommendations

Section 2C

North of SH 60 to North of WCR 42

STANDARD EXPRESSWAY



Section 2D

South of WCR 33 to North of WCR 48

STANDARD EXPRESSWAY

Conceptual Improvement Recommendations

Section 2D

South of WCR 33 to North of WCR 48

STANDARD EXPRESSWAY

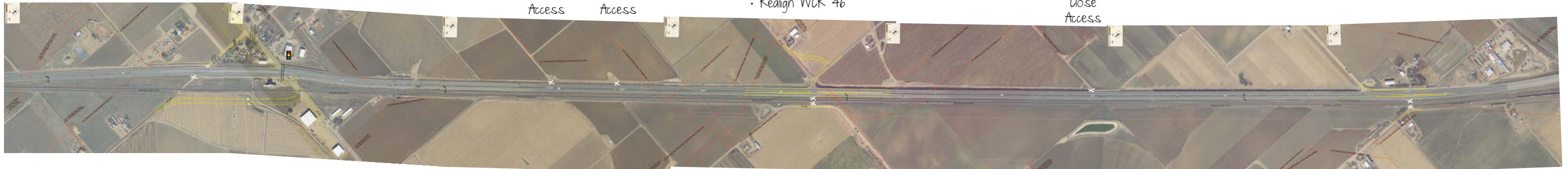
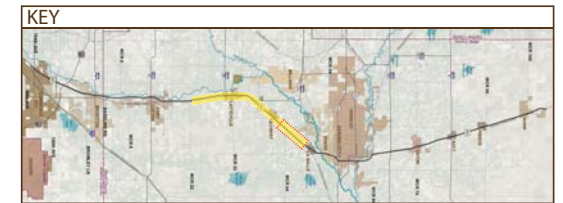
- Closure at WCR 33
- Signal at WCR 44
- East side connection WCR 33 to WCR 44

Close
Access

Close
Access

- Close WCR 35/46 on east side
- Channelized-T on west side
- Realign WCR 46

Close
Access



- Close WCR 37/48 on east side
- Channelized-T on west side



Section 3A

UPRR Bridge South of LaSalle to North of 31st Street in Evans

STANDARD EXPRESSWAY

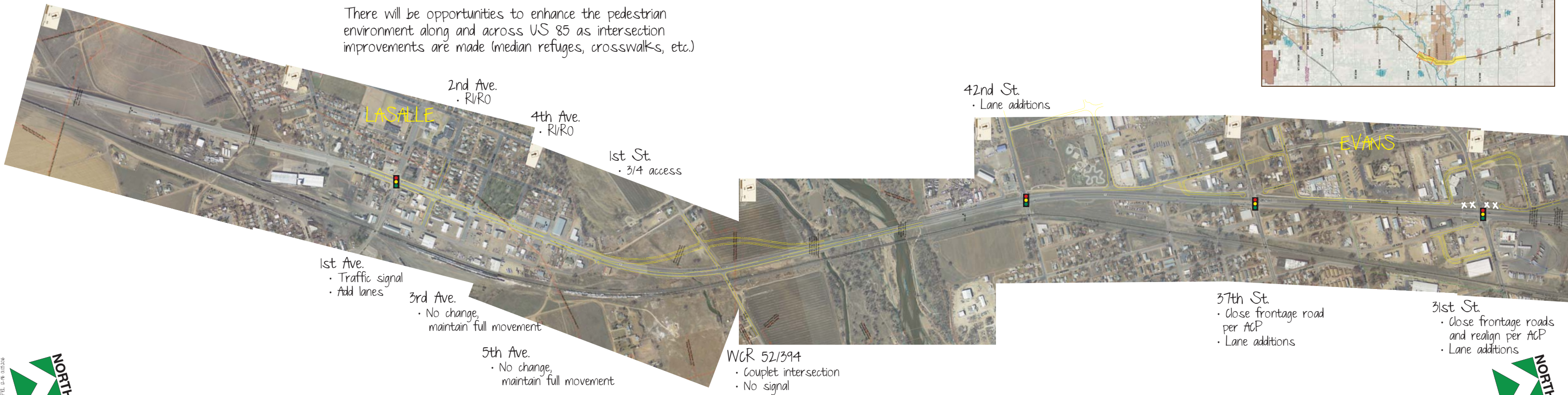
Conceptual Improvement Recommendations

Section 3A

UPRR Bridge South of LaSalle to North of 31st Street in Evans

STANDARD EXPRESSWAY

There will be opportunities to enhance the pedestrian environment along and across US 85 as intersection improvements are made (median refuges, crosswalks, etc.)

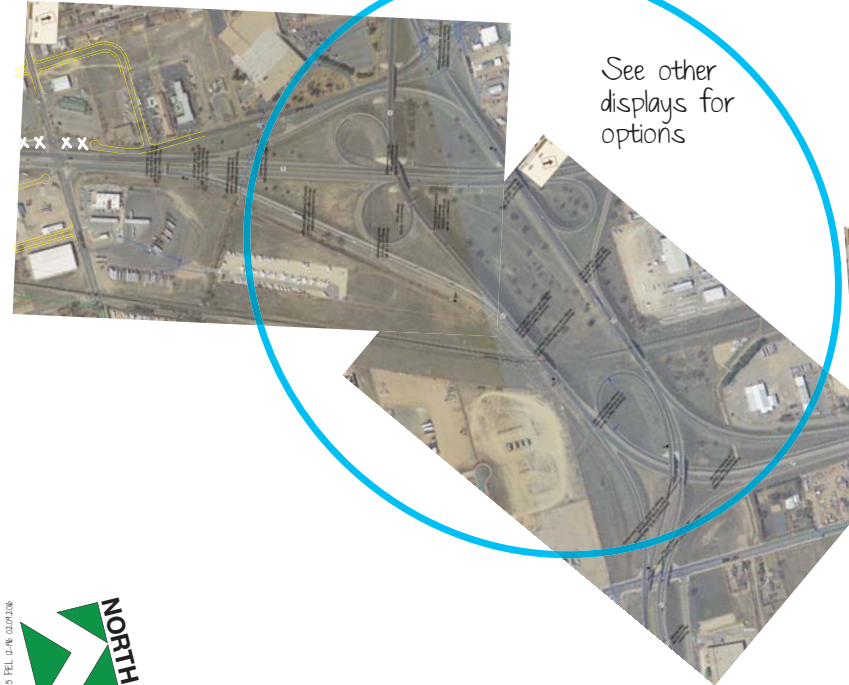


Section 3B

31st Street to North of 5th Street in Greeley

STANDARD EXPRESSWAY

- 31st St.
- Close frontage roads and realign per ACP
 - Lane additions



See other displays for options

Conceptual Improvement Recommendations



South of 22nd St, alternative access plan

Section 3B

31st Street to North of 5th Street in Greeley

STANDARD EXPRESSWAY

- 22nd St. to 5th St.
- Texas U-turn interchanges
 - Convert frontage road to one-way
 - Construct frontage road on east side

Realign WCR 41 to 5th St.



Section 3C

North of 5th Street to North of SH 392

ENHANCED EXPRESSWAY

Conceptual Improvement Recommendations

Section 3C

North of 5th Street to North of SH 392

ENHANCED EXPRESSWAY

10th St.
• Close and connect to WCR 66

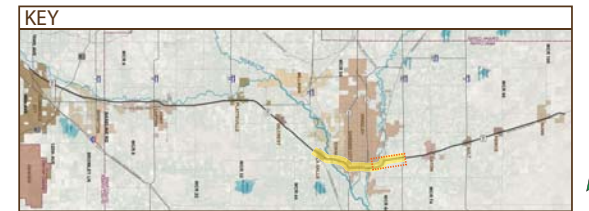
Close and realign 11th Ave.

WCR 66
• Traffic signal

SH 392
• Traffic signal
• Lane enhancements

New connection from WCR 64 to WCR 66

Improvements to WCR 39
WCR 66 to WCR 76



Section 4A

South of WCR 70 to North of WCR 76

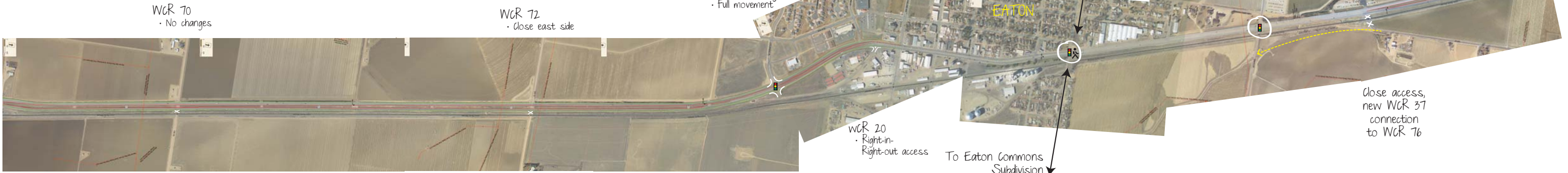
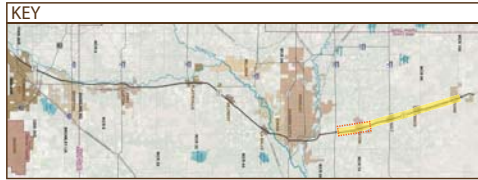
STANDARD EXPRESSWAY

Conceptual Improvement Recommendations

Section 4A

South of WCR 70 to North of WCR 76

STANDARD EXPRESSWAY



WCR 70
- No changes

WCR 72
- Close east side

Colorado Pkwy.
- Full movement

WCR 20
- Right-in-
Right-out access

To Eaton Commons
Subdivision

5th St.
- Pedestrian crossing enhancements
to improve regional connections
- Signalize when warranted

To Great Western Trail +
future Recreation Center

WCR 76 (10th St.)
- Signalize when
warranted

Close access,
new WCR 37
connection
to WCR 76

Improvements to WCR 39
WCR 66 to WCR 76

Option
- Eaton to Nunn - improved shoulders



Section 4B

WCR 78 to North of WCR 84

STANDARD EXPRESSWAY

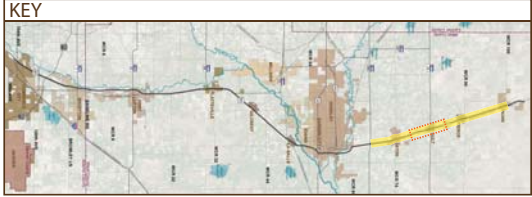
Conceptual Improvement Recommendations

MAIN STREET

Section 4B

WCR 78 to North of WCR 84

RURAL HIGHWAY



Option
Eaton to Nunn - improved shoulders



Section 4C

South of WCR 86 to North of WCR 92

RURAL HIGHWAY

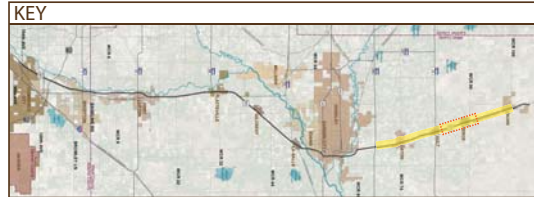
Conceptual Improvement Recommendations

ARTERIAL

Section 4C

South of WCR 86 to North of WCR 92

RURAL HIGHWAY



- WCR 90 / Rowe Ave.
- Signalize when warranted
 - Pedestrian crossing enhancements



Option
• Eaton to Nunn - improved shoulders

Option
• Eaton to Nunn - improved shoulders



Section 4D

South of CR 94 to CR 100

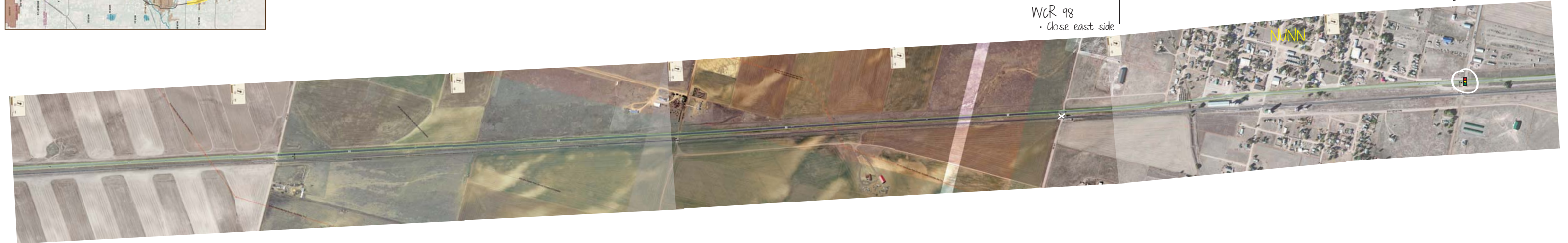
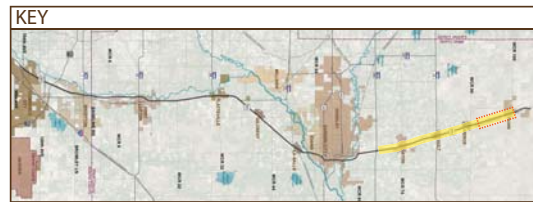
RURAL HIGHWAY

Conceptual Improvement Recommendations

Section 4D

South of CR 94 to CR 100

ARTERIAL



Option
· Eaton to Nunn - improved shoulders

Option
· Eaton to Nunn - improved shoulders

